



VINNO Technology (Suzhou) Co., Ltd.

5F, A Building, No.27 Xinfu Rd, Suzhou Industrial Park, 215123, China

Tel: +86 512 62873806

Fax: +86 512 62873801

Email: vinno@vinno.com

Website: www.vinno.com

VINNO reserves the rights to revise the technical specifications if needed.

VINNO M86

More care. More connectivity



VINNO
vision in innovation

VINNO TECHNOLOGY (SUZHOU) CO., LTD.

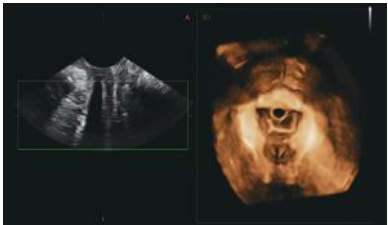
VINNO M86 is a high precision system designed for women's healthcare. M86 delivers extraordinary image clarity by VINNO's RF platform and coded multi-level pulse transmitting technology. As premium system in women's healthcare, M86 provides a lot of dedicated analysis tools and more connectivity solution.



Dedicated To Women's Healthcare

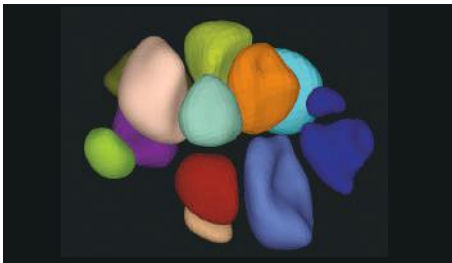
Pelvic Function Assessment

- Complete pelvic function analysis via vivid 2D and 3D dynamic imaging.
- Professional pelvic measurement package helps you to make decision in confident way.



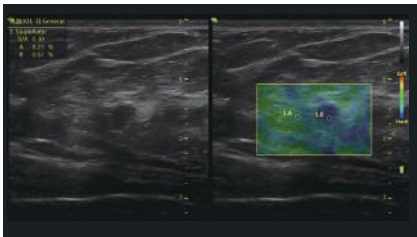
IVF Application

- **4D Oviduct Contrast Imaging**
Vivid surface rendering and accurate volume calculation reveals fallopian tube's information in three dimension.
- **Auto Follicle (2D&3D)**
Calculate the number and the volume of ovaries automatically



Premier Breast Application

52mm footprint, 256 elements high density wideband high frequency probe U5-15LE probe is dedicated for women's breast application combined with elastography function



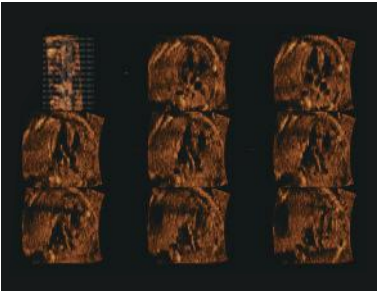
Obstetric Application

Precision Imaging, intelligent measurement method, powerful analysis tool all contributes to a comfortable and effective diagnostic environment to doctors.

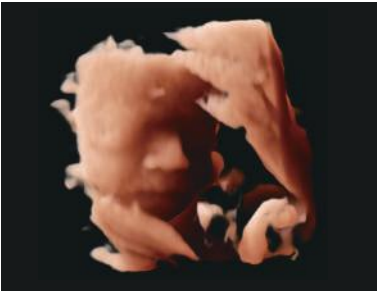
- **Auto OB function**
Semi-automated assessment of anatomy reduced exam time by locating standard image planes and anatomical structure including nuchal translucency, fetal brain, fetal long bones




- **Spatio-Temporal Correlation Imaging (STIC)**
Spatio-temporal image correlation (STIC) is an easy to use technique to acquire data from the fetal heart and to aid in visualization with both two-dimensional and three-dimensional (3D) cine sequences. The examiner can navigate within the heart, re-slice, and produce all of the standard image planes necessary for a comprehensive diagnosis.











- **HQ Technology**
HQ technology displays high resolution 3D anatomy with exceptional detail and realistic depth perception. Users determines the direction of a simulated light source, significantly enhancing clarity of surface detail and tissue parenchyma.



Comprehensive Collection of Transducer

	G2-5C Broadband Curved Array <ul style="list-style-type: none">• Application: abdomen, ob/gyn, urology, pediatric		F2-5C Broadband Curved Array <ul style="list-style-type: none">• Application: abdomen, ob/gyn, urology, pediatric
	S1-8C Broadband Curved Array <ul style="list-style-type: none">• Application: abdomen, ob/gyn, urology, pediatric		X6-16L broadband linear array <ul style="list-style-type: none">• Application: vascular, small parts, msk, nerve
	U5-15L broadband linear array <ul style="list-style-type: none">• Applications: small parts, specially for breast, vascular		X4-12L broadband linear array <ul style="list-style-type: none">• Applications: vascular, small parts, msk, nerve
	D3-6CX broadband curved array volume probe <ul style="list-style-type: none">• Application: abdomen, ob/gyn, urology		D3-6C broadband curved array volume probe <ul style="list-style-type: none">• Application: abdomen, ob/gyn, urology
	D4-9E broadband micro convex 4D endocavity array <ul style="list-style-type: none">• Application: ob/gyn, urology		F4-9E broadband micro convex endocavity array <ul style="list-style-type: none">• Application: ob/gyn, urology

	G4-9M broadband micro convex array <ul style="list-style-type: none">• Application: pediatric, abdomen, cardiac		X9-22L broadband linear array <ul style="list-style-type: none">• Applications: msk, nerve, small parts
	X10-23L broadband linear array <ul style="list-style-type: none">• Applications: msk, nerve, small parts		I7-18L broadband linear array (Hockey stick) <ul style="list-style-type: none">• Application: msk, nerve, peripheral vascular, small parts
	G1-4P phased array <ul style="list-style-type: none">• Application: cardiac, abdomen, ob/gyn		S1-6P phased array <ul style="list-style-type: none">• Applications: cardiac, Ob/Gyn, abdomen
	G3-10PX phased array <ul style="list-style-type: none">• Application: pediatric cardiology, abdomen		S2-9C broadband linear array <ul style="list-style-type: none">• Applications: abdomen, ob/gyn, urology, pediatric

Designed for Your Needs



21.5 inch LCD screen for wider view of image



integrated gel warmer delivering comfortable temperature feeling



luxury experience with electronic lifted control panel



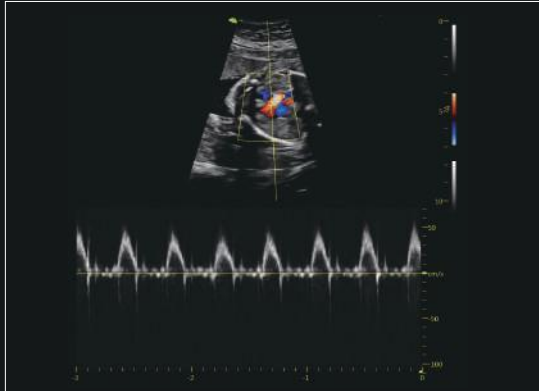
care hook design for clean cable management



standard five transducer ports for various application probe connection



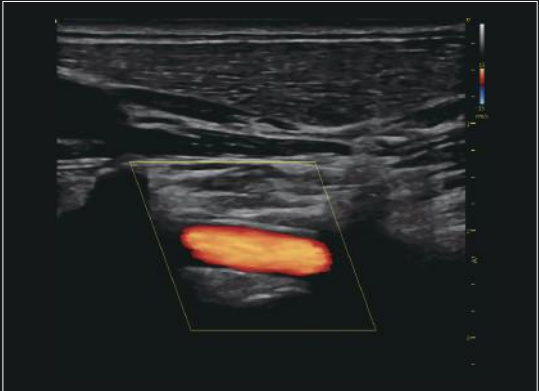
Image Gallery



Right ventricular outflow tract-PW mode



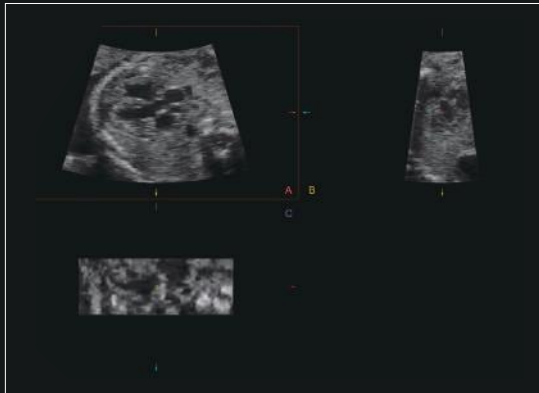
Fetal heart 4 chamber view-CFM



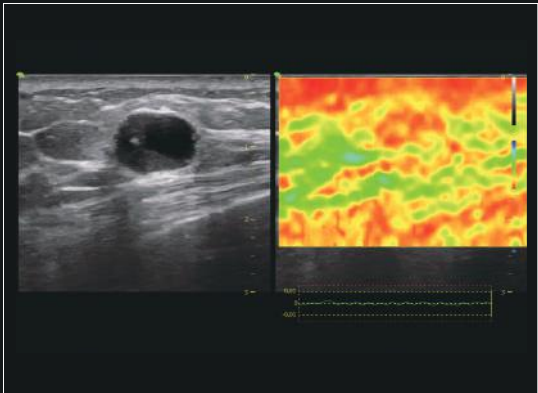
Vertebral Color Flow



Mitral valve



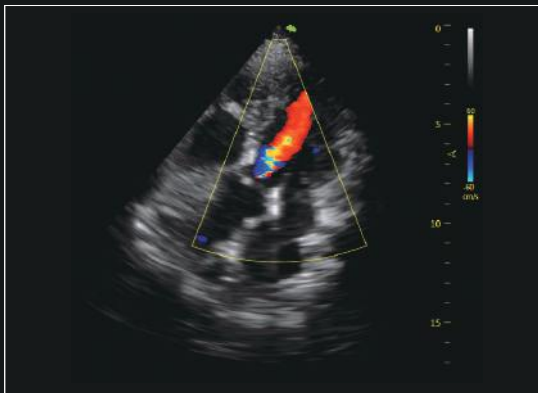
Left ventricular -STIC



Nodule of breast-EI mode



Liver-B mode



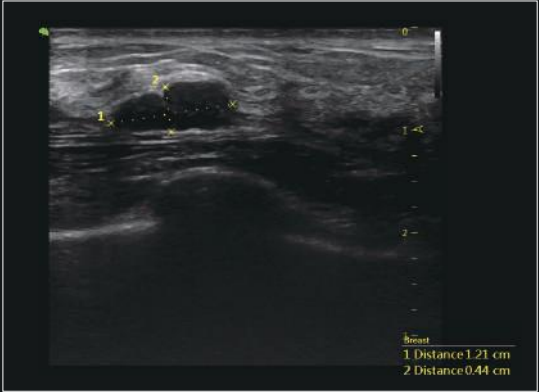
Aortic regurgitation flow-CFM mode



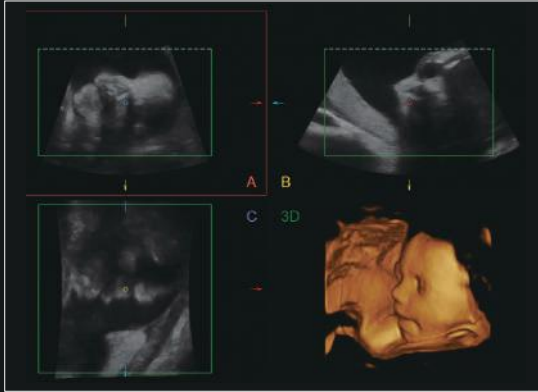
Transverse plane of cerebelum-B mode



Umbilical cord-CFM mode



Nodule of breast



Fetal face-4D mode